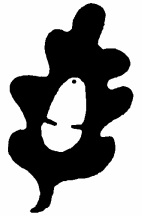


Southgate District Civic Trust

Newsletter
No. 212
April 2010



Chairman: Geoffrey Bone
The Tower, Quakers Walk,
Bush Hill Park, N21 2DE
Tel: 020 8360 2289

Secretary: Jane Maggs
108 Chelmsford Road,
Southgate, N14 4JL
Tel: 020 8882 4253

Treasurer: Alastair Palmar
5 Tintern Gardens,
Southgate, N14 6AS
Tel: 020 8882 9387

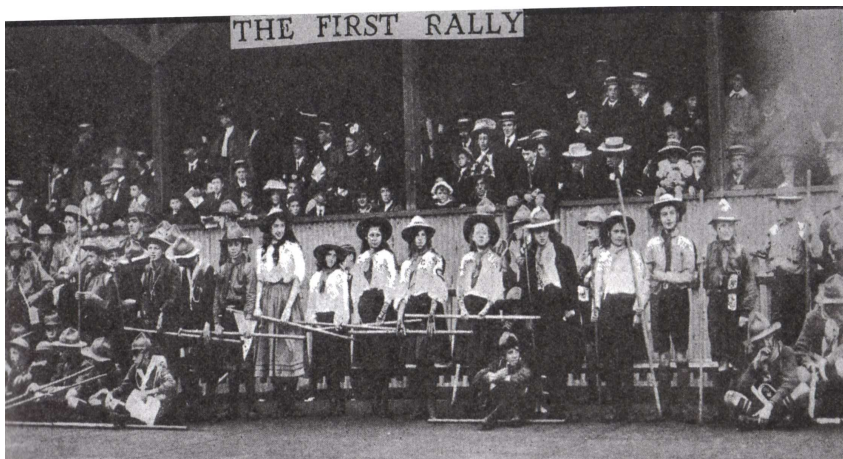
Social Sec: Janet Lane
12 Norman Way,
Southgate N14 6NA
Tel: 020 8886 3303

COMING EVENTS

ANNUAL GENERAL MEETING Saturday 8th May 2010 at 2.30 pm

Walker Lower Hall, Christ Church Parish Centre, 7 The Green, Southgate, N14

The AGM is essential to the successful functioning of the Trust. It gives members an opportunity to question the outgoing committee and to express their views, also to elect officers and the committee for the next year. The nomination form for the new committee is on **page 9**.



HISTORY GROUP MEETING

Wednesday 5th May 2010
at 7.30pm

Friends Meeting House,
Church Hill, N21

**“Something for the Girls -
The First 100 Years of Guiding”**
by Pam Daniels

(see page 7 for details)

ALL WELCOME (Male & Female!)

ANNUAL SUBSCRIPTIONS

Please note that annual subscriptions became due on 1st April.
Please send payments with the membership renewal form on **page 9**.

Dates for your diary:

Mon. 3rd May	May Day Fair on Southgate Green (see page 7 for details)
Sat. 8th May	Annual General Meeting, Walker Lower Hall 2.30pm
Wed. 7th July	History Group Meeting, Friends Meeting House Subject TBA

Contributions to the July newsletter should be sent by Friday 11th June 2010

to the Editors: Mary and Colin Barratt, 13 Beardow Grove, Avenue Road, Southgate, N14 4DG
Tel: 020 8882 2246 e-mail: colin_barratt@yahoo.co.uk

Notice to Newsletter Distributors:- We hope to deliver the next newsletter to distributors during week commencing 12th July 2010

Southgate District Civic Trust ~ Established to conserve and enhance the environment in Southgate, New Southgate, Cockfosters, Palmers Green, Winchmore Hill and Hadley Wood.

ELECTIONS TO THE EXECUTIVE COMMITTEE 2010/2011

The following members are willing to stand again:

President	Audrey Kirby
Vice-Presidents	Chris Howell
Secretary	Jane Maggs
Treasurer	Alastair Palmar
Social Secretary	Janet Lane
Newsletter Editors	Mary and Colin Barratt
Committee Members	Irene Stone
	Geoff Bone

We have received a nomination for the post of:

Chair	Graham Beech
-------	--------------

We have not received nominations for the posts of:

Vice president
Or, for new members of the committee.

We urgently need to have more members involved on the committee. Please consider if you can help by sparing a few hours.

Not only will more committee members help to spread the load, but the SDCT can then get more involved in local projects, proposals, or issues that are of interest or concern to members. It will then be easier for us to attract new and younger members to the Trust to carry on the work already started.

If you would like more information, please contact one of the committee.

CIVIC VOICE IS LAUNCHED

The Civic Societies Initiative has ended and the Civic Voice has been launched as the new national charity for the civic movement.

At the last meeting of the Executive Committee, the feedback received from members was discussed. It was decided that the Southgate District Civic Trust (SDCT) will join this new national movement.

With Civic Voice we will be part of the country's most important movement campaigning for the places where everyone lives to be more attractive, enjoyable and distinctive.

Some members expressed concern at the cost. I'm pleased to report that this will be much lower than we originally expected, at £1.50 per member. Overall the fees to the new organisation will probably be very slightly higher than we used to pay to the old Civic Trust, but the Committee agreed that this will not require an increase in the subscription rates for 2010.

You can find out more about Civic Voice and the work of the civic movement by visiting www.civicvoice.org.uk or writing to Civic Voice, Unit 101, 82 Wood Street, The Tea Factory, Liverpool L1 4DQ or phoning 0151 708 9920.

Jane Maggs

NEWS FROM CIVIC VOICE

Below are some of the topics raised in the last bulletin from Civic Voice. If you would like more information, please let me know or visit www.civicvoice.org.uk.

Speculation grows on Government planning guidance for historic environment

The long awaited and much disputed new Planning Policy Statement (PPS) 15 on the historic environment may be squeezed through just before the General Election. The Civic Society Initiative was one of the leading critics of the draft PPS. Our concerns were widely shared and helped trigger a rare letter from a House of Commons Select Committee threatening to mount an inquiry unless there was a visible response by the Government to the concerns being raised. Planning Minister John Healey MP let it be known through newspaper comments that a rethink was underway and a strengthened PPS may make it through the Government machine towards the end of March - with 22 March being touted as a likely launch date. The PPS may also be accompanied by the Government's "vision" for the historic environment - the first strategic statement since 2001 and just weeks before an election.

Far sighted report sheds new light on shifting land use

After two years of intensive study the Government's Foresight Unit has published what is sure to be an influential report on future land use change. The report highlights the stresses likely to arise from trends in new development and farming alongside a growing desire for green space from the public and the impact of climate change and pressure on natural resources. It highlights some key choices which we will face in the future and demonstrates why "business as usual" will result in serious stresses on the environment and land values. The three main stresses identified are the pressure on land in the South East of England, the implications of climate change and the challenge of meeting society's needs for beautiful, accessible, wildlife rich landscapes that also manage water resources, protect soils and store carbon. In a joint statement the Campaign to Protect Rural England (CPRE) and the Royal Society for the Protection of Birds (RSPB) welcomed the report but highlighted concerns about a narrow economic perspective on the issue of development in the South East which runs the risk of ignoring the importance of "*beauty, tranquillity, birdsong, a sense of place - these all have a value which is not captured by the market*".

Manifesto for churches published

A short manifesto of key priorities to care for historic places of worship has been published by the national forum for organisations involved in these important parts of our heritage. Places of Worship @ Heritage Link is calling for continuation of current grant support and an end to the freeze on Department for Culture, Media and Sport (DCMS) grant-in-aid schemes as well as efforts to raise public awareness of the number of historic places of worship at risk.

Transport campaigners unveil manifesto

With one eye on the impending General Election a group of major national transport and environmental groups has launched a manifesto for *Improving everyday transport*. Led by the Campaign for Better Transport (previously Transport 2000) and involving groups like CPRE, Cyclists Touring Club and Friends of the Earth it includes proposals to make 20mph the default speed limit in areas where people live and work.

Taking control in Conservation Areas

Local councils have powers to remove some of the freedoms from planning control which can make a real difference in Conservation Areas. They can issue "Article 4 Directions" which restrict "permitted development rights" and many civic societies have successfully campaigned for their use.

There is now useful guidance from English Heritage on the procedures. A copy of which will be given to the SDCT Planning Group.

Local papers to keep carrying planning applications

Despite strong contrary pressure the Government has decided to continue to require planning applications to be publicised through local newspapers as well as on websites. Site notices for applications for conservation area and listed building consent must now also be for 21 days.

20's plenty

The campaign to reduce speed limits has received a major boost with the publication of new guidance from the Department for Transport which encourages councils to think about introducing 20mph zones and not just reducing limits on individual streets. This follows a successful pilot in Portsmouth. There is more information at <http://www.dft.gov.uk/pgr/roadsafety/speed-limits/>

Key Links from the Civic Voice Bulletin

- The Heritage Alliance promotes the role of the voluntary movement in the heritage sector: www.heritagelink.org.uk/
 - Public Realm advice for civic societies: www.publicrealm.info/prian_civic_societies.html
- The Planning Portal - your one-stop-shop for planning information online: www.planningportal.gov.uk/

Jane Maggs

TOWN PLANNING

Since my last report a further new Conservation Area has been designated, The Lakes Estate. As with most of the others it has been more than 20 years since areas were highlighted and put forward for designation, but it has taken that long for an Enfield Council to manage to make it possible. We are well aware of the cost of these new areas to the Council and we are grateful for the work that has been undertaken to create as much as they have in a short time.

Our Group has dealt with 22 town planning applications in the last few months, quite a few in Southgate Circus, which were mainly dealing with shops, but there was an application for flats above where 2 x 2 bed flats have retrospectively been altered to 4 x 1 bed flats, and the second application for a private school, which is proposed in an empty office building, having earlier withdrawn their previous application.

In February we received an application for a fourth cottage to be built in the garden beside 3, Woodside Cottages, N21. This was proposed in the curtilage of these 3 Grade 2 group listed buildings that would destroy the integrity of them. It has been withdrawn. These cottages have been included in books of the area and postcards of them are very popular, to consider adding a new one, even if it is designed to match, is not acceptable and received a great deal of local opposition.

Although not in a Conservation Area, Chelmsford Road, N14, off Chase Side, has a redevelopment proposed for Chase Side Works to be rebuilt into blocks of flats and some terraced houses. Most of these will be opposite the existing small Victorian and Edwardian houses. Our Group has looked at the drawings and a letter was sent to the planning officer with our objections to the scheme as it was being presented. There is no objection to a redevelopment of the site, but it could be more sympathetic to the road in which it is proposed.

I often receive calls from people who are given my telephone number who have questions on many aspects of planning that they are concerned about. They are not always members, but I give them advice anyway. If a member does make it possible for a friend to contact me it would be nice if they tried first to ask them to become members eventually.

Any member of the Trust who would be interested to come to a meeting, please telephone me on 0208 364 3500. Our next meeting is on Wednesday 14th April at 6 Eversley Mount, Winchmore Hill, N21.

Irene Stone

OPEN MEETING – 6th March 2010

Richard Purver – Flora Robson in Palmers Green and Southgate

Richard's talk was initiated by two events – his article in Oakleaves 4 and the plan to place a blue plaque on her Southgate home. It was obviously a popular subject, as the meeting was very well attended by about 40 people, many of whom were not members and some from Palmers Green High School, Flora Robson's old school.

Richard took us through Flora Robson's early life in South Shields, where she was born in 1902. Her Scottish father was in the merchant navy at that time, but in 1907 his work took him to London, so the family settled in Palmers Green, at 76 Devonshire Road, when the area was beginning to develop from countryside into the Edwardian suburb we know today. They moved in 1910 to The Lawe in The Mall in Southgate, where they are recorded in the 1911 Census.

As a small child, Flora started performing in local events. Her father predicting that she would be the 'next Ellen Terry', so her talent was recognised very early. Richard was able to bring her childhood to life with several interesting and amusing stories, which gave us an insight into her family and home life.

She attended two other local schools as she grew up before Palmers Green High School, where she was a contemporary of Stevie Smith. She was invited back a number of times to present prizes, including at the school's 50th anniversary, when the whole school of 300 pupils performed in a play in front of her. A Cup for Speech and Drama in memory of Dame Flora Robson was established by the school after she died in 1984.

The Robson family were active members of the Congregational (now United Reformed) Church in Fox Lane. In fact one of the foundation stones was laid by Flora's mother. Flora played the organ and did admit to liking to play loudly with all the stops out – only stopping when the neighbours complained!

Richard gave us a flavour of Flora Robson's roles in film, theatre, TV and on the radio. We were treated to stories about the various roles, although all were much amused by the suggestion that she often played a murderer!

If you would like to know more about Dame Flora Robson, I can recommend Richard's article in Oakleaves 4, which is still available.

To remember Dame Flora Robson in our local area a blue plaque will be unveiled on her former home at The Lawe, 65 The Mall on 25th April at 3pm. All are welcome to this event, which is jointly sponsored by the Southgate District Civic Trust and Palmers Green High School.

Jane Maggs

NEW SOUTHGATE MASTERPLAN

On 17th March, the Draft Masterplan was launched by the Council, and is available for consultation until 9th June 2010. The beginning of the document explains why a Masterplan is being prepared:-

“New Southgate is one of our Place Shaping Priority Areas. We are committed to improving these areas by working with local residents and businesses to identify what can be improved, such as parking, open spaces, and how we should improve this. We want to improve the physical environment in these areas but also improve the life chances and opportunities for people living in the area, such as access to healthcare, training and less anti-social behaviour. The New Southgate Masterplan sets out all of the different issues we will work on to improve New Southgate and how we will go about delivering these improvements.”

The Masterplan is a weighty document of 125 pages! It can be viewed online at www.enfield.gov.uk/placeshaping, or at the Civic Centre and various other places in the New Southgate area. You can also order a printed copy from Suzanne Johnson (020 8379 5537, suzanne.johnson@enfield.gov.uk) or Rachel Smith (020 8379 3640, rachel.smith@enfield.gov.uk).

There will also be mini-exhibitions of the plan on Mon. 12th April in Bowes Road (3.00pm-6.30pm), and Tues. 13th April in Grove Road Open Space, N11 (3.00pm-6.30pm).

We hope to report in more detail on the plan in the next newsletter.

Colin Barratt

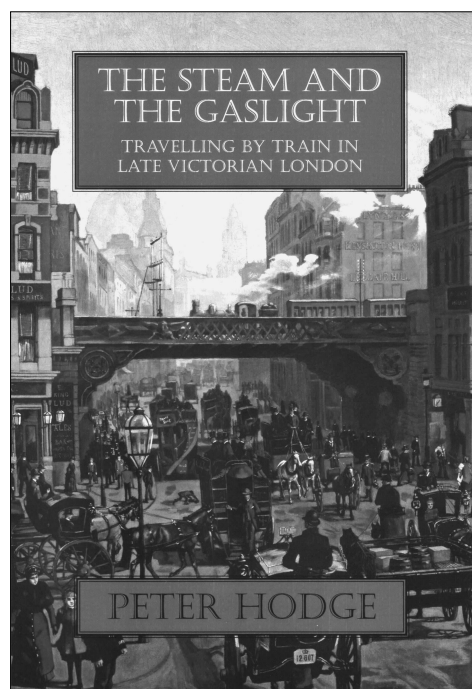
RAILWAY GRUMBLES

London rail commuters who feel they are getting a raw deal should read a new book by Trust member Peter Hodge – “The Steam and the Gaslight: Travelling by Train in late Victorian London”. They will find that the hardships endured by their late Victorian forebears were somewhat greater than those experienced by train travellers today.

Before the advent of tube railways, electric tramways and motor buses, the only alternative to horse-drawn transport in London was the network of steam railways criss-crossing the capital. Drawing on contemporary comment in newspapers, periodicals and elsewhere, Peter gives his readers an impression of what it was like to travel by train in late 19th century London.

The book covers an area extending out as far as Enfield, Barking, Sutton and Ealing. Comment from our own locality comes chiefly from users of New Southgate Station, who complained about inadequate waiting rooms, uncomfortable rolling stock and a smell of fish in the carriages. They also campaigned successfully to have “Colney Hatch” dropped from the name of their station.

“The Steam and the Gaslight” is available from the publishers, Melrose Books, St. Thomas Place, Ely, Cambridgeshire CB7 4GG, price £9.99 plus £2.95 postage and packing. Alternatively, it can be ordered from any bookshop. The author also has some copies for sale at the cover price; please contact him on 8360 6465.



IMPROVING OUR PLACE WITH THE BROOMFIELD COMMUNITY ORCHARD

The 'Broomfield Community Orchard' is a new orchard created on an old bowling green in Broomfield Park by local people working in partnership with Enfield Council. Over 30 people attended the inauguration of the orchard on the 5th December 2009, including five councillors and David Burrowes MP, at which Cllr Edward Smith planted a tree to celebrate the event. Volunteers planted 24 trees including eleven different traditional varieties of apples (such as Ashmead's Kernel, Blenheim Orange, D'Arcey Spice, Ellison's Orange, George Cave, Howgate Wonder, Pitmaston Pineapple, James Grieve and William Crump), and other fruit trees such as a Black Mulberry, an Isfahan Quince and a Royal Medlar.

Located next to the bowling green off Aldermans Hill, the orchard area has been unused for over 15 years and has many wild flowers on it. It is laid out with two diagonal avenues of trees with espaliers around the edges and will include seating. It is hoped that it will become a beautiful and peaceful place to be; fruit trees in an area with wild flowers; adding to the bio-diversity of this historic park. The fruit will be available to local people, schools and community groups, expanding the borough's capacity to grow more produce locally.

The orchard project is part of the 'Improving our Place' (IOP) initiative by local people who are keen to improve the quality of life in this part of the Southgate, Palmers Green and Winchmore Hill. IOP is a new campaigning group whose goal is to develop a stronger sense of community and enhance the quality of life in the area. This can be achieved through improvements such as better managed and safer streets, a greener environment, better local facilities, and improvements to the main shopping streets. For more information about the group see www.improvingourplace.co.uk. The Community Orchard is supported by the Friends of Broomfield Park www.friendsofbroomfieldpark.org and the Fox Lane and District Residents' Association.

Volunteers Needed for the Next Steps

Although we have made a good start with the orchard, this is only the beginning. We need volunteers to help us with things like fundraising, publicity and doing a wild flower survey in the spring. If you would like to be involved in this exciting new project in some way, sponsor a tree or just come along to have a look, we would like to hear from you.

Contact: David March at broomfieldcommunityorchard@yahoo.co.uk

MAY DAY ON THE GREEN

The **Christ Church May Fair** will once again be held on Southgate Green,
On **Bank Holiday Monday, 3rd May**
From 11am to 4pm.

As usual, the Trust will have a display and sales table, with our publications available. We hope this will attract a good deal of interest. Please come along to support us. Proceeds from the fair will go to Christ Church and the Thalassaemia Society.

ENFIELD LOCAL HISTORY UNIT

Those who have tried, without success, to find our borough's Local History Unit on its website, fear not! It hasn't been disbanded. It closed down while the library was moved back to the renovated Enfield Town building at the beginning of March, but has now reopened.

Our treasured archives are safe and well in the room it has occupied on the first floor in Thomas Hardy House since relocating from the basement of Palmers Green library, and is open as before on Monday, Tuesday, Thursday and Friday, from 9.30am to 4pm. Ring 020 8379 2724 or 020 8379 2839 to make an appointment.

STREET CLEANING IN SOUTHGATE

If you use Southgate Station regularly, you will probably have noticed the growing piles of dog ends and rubbish around the bikes. This would be pretty disgusting any where, but it is particularly surprising in a Conservation Area outside a Grade II* listed building,

The local council was contacted by the Southgate District Civic Trust and the problem reported. It appears that this area of street should be swept twice a day. The Council team have spoken to the cleaners and the local supervisor, as a result the cleaning seems to have resumed.

This is a small, but important action to maintain our local environment the way we would all wish. If you have any concerns about the state of the borough, please contact the council or one of the committee, so we can continue to maintain our environment the way it should be.

Jane Maggs

HISTORY GROUP 5th MAY - SOMETHING FOR THE GIRLS

"In 1909, in a world where men wore the trousers and women had no vote, the actions of a few feisty girls were to lead to the establishment of the world's largest organisation for girls and young women, a movement that was to transcend the barriers of background, race, nationality and faith.

100 years on, more than half a million girls in the UK and 10 million across the globe continue to push boundaries, following the example of generations of guides who have gone before them." (from "Something for the Girls", the official guide to the first 100 years of Guiding).

Pam Daniels will talk about the development of the Guide movement, which will include some interactive elements! It should be an enlightening evening!

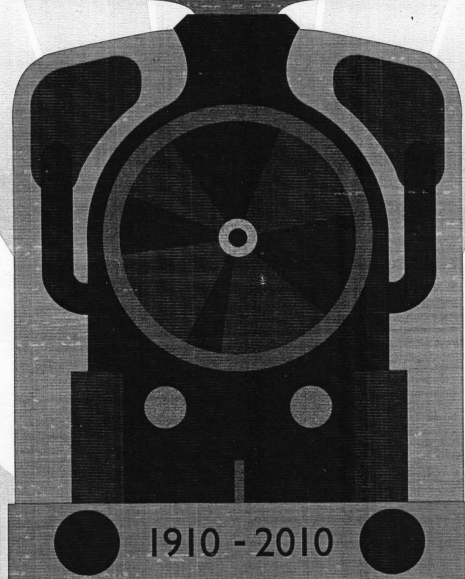
**MAKING TRACKS - an exhibition at Forty Hall to celebrate
the centenary of the Great Northern Railway extension
28 April - 20 June 2010**

enfield
museum service

Enfield Railway Historians

MAKING TRACKS

A 100 years of the railway from Grange Park to Cuffley



1910 - 2010

Visit the exhibition from
28 April - 20 June, 2010
at Forty Hall, Forty Hill
Enfield EN2 9HA

Free admission - Open 11am to 4pm, Wed to Sun
www.enfield.gov.uk/museum or tel 020 8379 1468/1469



During the Centenary Exhibition, the Museum is organising several different family events at Forty Hall:

Saturday 1st May 11.30am – 3.30pm

Model railway layouts provided by the Enfield Town Model Railway Society and including a Thomas the Tank Engine layout.

Friday 14th May 6.00pm – 9.00pm

An opportunity for all the family to spend a relaxed evening seeing the exhibition and taking part in complementary activities. (Part of the national "Museums at Night" programme).

NOMINATION FORM – ANNUAL GENERAL MEETING – 8th May 2010

To: The Secretary,
Southgate District Civic Trust,
108 Chelmsford Road,
Southgate, N14 4JL

From: _____

I wish to nominate _____ for election as:

A. An officer of the Trust, in the post of _____

B. A Member of the Executive Committee
(Delete as appropriate)

Signed: _____ Date: _____

I agree to be nominated for the above position. Signed: _____

Address: _____

SOUTHGATE DISTRICT CIVIC TRUST – MEMBERSHIP RENEWAL

Your subscription for the year 2010-2011 is now due, and it will help if you can please use this form, and send it with your payment to the Treasurer as soon as possible. At the same time we will be pleased to receive any additional donation to the Trust that you may like to give. Many thanks for your ongoing support.

THE AMOUNTS FOR MEMBERSHIP ARE:-

Non-Pensioner Household **£7**

Pensioner Household **£4**

To: Alastair Palmar
Treasurer
Southgate District Civic Trust
5 Tintern Gardens
Southgate
London, N14 6AS

I enclose my 2010/11 subscription £ _____

I also enclose a donation of: £ _____

Total: **£** _____

Name: _____

Date: _____

Address: _____

E-mail address: _____

