

Southgate District Civic Trust

Newsletter
No. 227
Jan. 2014



www.southgatedistrictcivictrust.co.uk

Chairman: Graham Beech
83 Seafeld Road,
New Southgate, N11 1AR
Tel: 020 8245 6998

Secretary: Jane Maggs
108 Chelmsford Road,
Southgate, N14 4JL
Tel: 020 8882 4253

Treasurer: Alastair Palmar
5 Tintern Gardens,
Southgate, N14 6AS
Tel: 020 8882 9387

Social Sec: Janet Lane
12 Norman Way,
Southgate N14 6NA
Tel: 020 8886 3303

COMING EVENTS

OPEN MEETING

Saturday 8th March 2014 at 2.30pm
Walker Lower Hall, Christ Church Parish Centre,
7 The Green, Southgate, N14

“Southgate Literati”
by Joe Studman

Joe will give a talk on some of our famous local writers
and poets, including Leigh Hunt and Thomas Hood.

ALL WELCOME



**Note for your
diary:**

SDCT AGM

**Sat. 10th May
2014
2.30pm, Walker
Lower Hall**

HISTORY GROUP MEETING

Tuesday 11th March 2014 at 8.00pm
Friends Meeting House, Church Hill, N21

**“Enfield’s Railway History Part Two: (West)
Great Northern Main Line and Hertford Loop”**
by Dave Cockle

(See page 4 for details)

See inside for: Civic Voice Convention and AGM (page 8)
Report of our October Open Meeting (page 6)
Publication of Oakleaves 5! (page 9)

Other Date for your Diary:

Tues. 13th May **History Group Meeting** A View of the New River Rachael Macdonald

Contributions to the April newsletter should be sent by Friday 14th March 2014
to the Editors: Mary and Colin Barratt, 13 Beardow Grove, Avenue Road, Southgate, N14 4DG
Tel: 020 8882 2246 e-mail: colin_barratt@yahoo.co.uk

Notice to Newsletter Distributors:- We hope to deliver the next newsletter to distributors during week
commencing **14th April 2014**. Emailed copies should be available for members w/c **7th April**.

Southgate District Civic Trust ~ Established to conserve and enhance the environment in Southgate,
New Southgate, Cockfosters, Palmers Green, Winchmore Hill and Hadley Wood.
(Registered as an amenity society with **Civic Voice**).

UPDATE FROM CIVIC VOICE

Future of English Heritage

On 6th December 2013, the government published its consultation on proposed changes to how English Heritage delivers its services, specifically the management and maintenance of the National Heritage Collection.



The proposal is that a new charitable arm, retaining the name English Heritage, will be responsible for managing all of the historic sites, while a new organisation called 'Historic England' will be created, with responsibility for advising on and helping to conserve England's wider historic environment. The new charitable status will give English Heritage freedom to raise funds – with a target of finding £83 million from third parties.

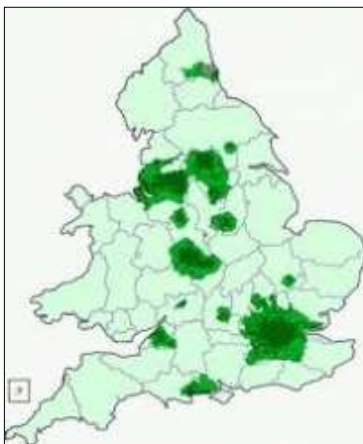
You can read the consultation at <https://www.gov.uk/government/consultations/english-heritage-new-model-consultation>.

Civic Voice would appreciate any feedback to be sent to info@civicvoice.org.uk before January 20th 2014.

National planning policy to be reviewed

Civic Voice welcomed the announcement that the Department for Communities and Local Government Select Committee is to undertake a review of the National Planning Policy Framework (NPPF) in 2014.

The importance of this review was highlighted again this week when the Association of Convenience Stores published a report saying that three-quarters of new retail space approved since the NPPF came into effect is set to be located out of town. The report, commissioned by the ACS, concluded that the government's 'town centre first' policies set out in the NPPF has failed. The report and response are available on the Civic Voice website.



APPG for Green Belt seeks evidence

The All Party Parliamentary Group on the Greenbelt is seeking responses from interested parties and groups about how Greenbelt land is protected and preserved for the future. The group intends to publish a report on the basis of this evidence in Spring 2014, with oral evidence sessions also being held in the New Year.

Deadline for submissions to Civic Voice via info@civicvoice.org.uk is 15th January 2014 to give them time to draft an official civic society movement response.

Councils would be required by law to adopt a local plan

Following on from the government announcement that it will 'consult on measures to improve plan-making, including a statutory requirement to put a local plan in place', Nick Boles has since told the Department for Communities and Local Government Select Committee that he thinks it's reasonable to send a clear signal that it is a fundamental role of local government to produce a local plan.

More information on these and other issues is available from Civic Voice.

Jane Maggs

SDCT ALERTS TO MEMBERS

Many of you will be aware that Southgate District Civic Trust sends out e-mail alerts and reminders about meetings and events organised by us, as well as those by other local organisations.

If there is sufficient notice then these will be advertised in the Newsletter so that everyone is informed. However, often we only hear about interesting events a few days before hand – hence the need to use e-mail.

Hopefully you find them of interest – let us know what you think.

If you are aware of other events that might be of interest to our members, please send us details (Colin Barratt colin_barratt@yahoo.co.uk or me jane.maggs@btinternet.com) so we can send out a message to the members.

Not receiving the e-mail alerts?

If you have an e-mail address and would like to receive these alerts, please send us both your e-mail address to be added to the list. Your Newsletter will still be provided by post unless you tell us to change delivery method to e-mail.

No e-mail or computer, but want to keep in touch? You can!

There are many people who do not want the trouble or expense of running a computer. But, **you do not need to own a computer** to keep in touch. Enfield libraries provide computers **anyone** can use. They will even give you training – just ask at the library desk.

Jane Maggs

SOUTHGATE CHRISTMAS FAIR

At the end of November, Southgate Chamber of Trade organised its Christmas Fair. There were stalls selling food and gifts, as well as Reindeer, carriage rides, Father Christmas and quite a lot of excited children.

SDCT had a space outside the Police Station and took full advantage of the space by fixing our large banner to the railings. The stall was decorated with tinsel and looked festive. This time we shared our space with member authors and even displayed a large chunk of the Minchenden Oak taken from the recent tree work.

The day was very cold, but the hardy volunteers were sustained with regular cups of coffee and even mince pies. Given the conditions we had a successful day and sold a reasonable number of books, DVDs and quite a few postcards. Talking to the traders later, they were happy with the day and it could well become a regular event.

Jane Maggs

Photos Mervyn Maggs



THE IDEAL HOME

We were recently contacted by the Chairman of the Weymouth Civic Society, who used to live in Meadway, Southgate. He had turned up a copy of The Ideal Home magazine, from April 1932, linked to the Daily Mail Ideal Home Exhibition. In it, there was an article about good design, featuring his former house, and he asked whether we were interested in having it. Of course, I said yes, and he posted the whole magazine to me.

The article starts as follows:-

It is not often that we can point to a house and say: "There, from back to front, inside and out, in planning, decoration and furnishing, is good design." The nearest we have ever come to doing this is in one of two semi-detached houses at Meadway, Southgate. Both houses are, of course, by the same architect; but he and his wife have made their home in one and have endeavoured to decorate and furnish it in accord with the house itself.

The article shows exterior photos of the two houses, a plan of the ground floor, and three pages of interior views of the one occupied by the architect. The exterior photo from the magazine is shown below. Unfortunately, these days the house is largely obscured by bushes and trees, so a comparative current view is not possible.



HISTORY GROUP MEETING - Tuesday 11th March 2014 Enfield's Railway History Part Two

The Great Northern Railway's (GNR) Main Line, linking London with York, opened in 1850, ten years later than the Lea Valley line in the East. The only two stations actually falling within the Borough are New Southgate (originally named Colney Hatch), which was opened with the line and Hadley Wood (opened 1885), which we look at in some detail.

Dave Cockle's illustrated talk will show the many changes over the years and the social impact the coming of the railway had on the communities it served.

ALL WELCOME



View southwards from footbridge at New Southgate Station

HISTORY GROUP MEETING – October. 2013

St Pauls Church Winchmore Hill by Peter Hodge

Peter started by explaining how the church came to be built. After the French Revolution in 1789 there was great fear in Britain that civil disorder would spread. It was decided that the best defence would be to strengthen the established church. The Church of England was almost invisible in certain areas, and some people had moved to non-conformity, especially Methodism. In 1818 Parliament passed the Church Building Act. This encouraged the building of new churches, especially in areas of expanding populations. Local parishes were offered financial support with this, and 600 churches were built between 1818 and 1856.

The population of Winchmore Hill was about 1000 in 1820. Walker Gray felt there was a need for a church in the locality, and he donated land facing Church Hill in 1826. Why was Winchmore Hill in need of a church? It was some distance to other parish churches, and it served a wide range of population, both rich and poor.

The system of charging for using certain pews (pew rents) had been in use since the 13th century, and it was planned that any new churches would have 50% of its pews rentable and the remainder free. This was achieved in Winchmore Hill. The last pews to be rented were as recent as 1962!

St Paul's Church was built in two years (1826-28), and cost £4,200. The architect was John Davis. It was one of his first commissions. He was asked to design it in the Gothic style, but he produced basically a Georgian building with Gothic embellishments. In 1964 a water colour painting was discovered, which was the architect's drawing of the church.

Following his talk, Peter took the group across the road for a tour of the church itself. Originally, Anglican services centred on preaching and the reading of scripture, so the altar was quite small, and in a recess. Later in the 19th century more space was required for devotional and ceremonial elements in the service and a robed choir. A chancel was first built in 1889 and extended in 1928. A side chapel was also built in 1889 and a marble font added in 1892 from Teignmouth.

Unfortunately, being dark outside, the stained glass windows were not visible, but we had an interesting tour of the building, and were shown the various architectural features of this historic local church.

Colin Barratt

SOUTHGATE OPEN SPACE BY THE BUS STATION

As mentioned in previous Newsletters, we have been concerned about the open area next to the old Blockbuster store, which is in need of some care and inspiration.

SDCT applied for a grant from the Southgate Ward Enfield Residents Priority Fund, in order to obtain the funds and expertise needed. The land is owned by Transport for London (TfL), so they needed to be consulted before the grant could be approved, which has slowed everything down. Following discussions with TfL, it was agreed that we could go ahead, so long as they are informed of the plans.

So now we need to work out what to do! Please contact me to be involved.

Jane Maggs

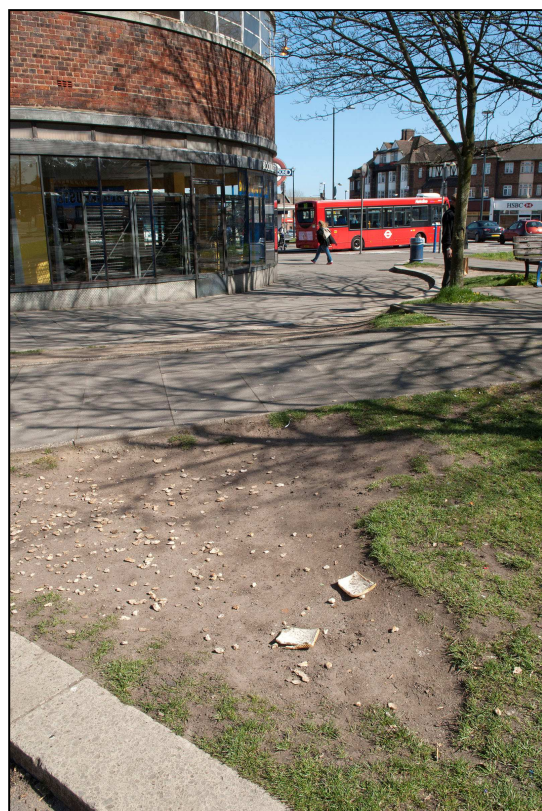


Photo: Mervyn Maggs

OPEN MEETING - Saturday 12th October 2013

The work of THAMES21 by Aimee Felus (Project Manager)

Thames21 is one of the country's leading waterway charities. It originally started in response to the litter found along the River Thames, but has since moved into habitat improvement.

Our speaker Aimee Felus is managing Thames21's *Love the Lea* project in Enfield. This also includes the River Lea catchment, so of particular interest to us is their work around Salmons Brook, Grovelands Park, Boxers Lake and Houndsden Stream.

Aimee started her talk by asking if we thought that the levels of water pollution in the River Lea had improved in the last few years. Most of us thought pollution had improved and were shocked to discover that although industrial pollution has reduced, other types of pollution have actually increased.



Photo – Jane Maggs

Not only was this a surprise, but also from the photos shown, it is clear the natural ecosystem has been decimated. Members spoke of their childhood memories of fishing for sticklebacks locally, sadly no longer possible.

The talk then went on to explain how we often unwittingly cause the pollution, using photos, diagrams and the experiences of local volunteers.

One of the big issues highlighted is where waste pipes from new toilets, washing machines etc. have been connected to the rainwater drainpipe rather than the sewer. This means all the water (and other content) is sent straight into the local waterways. The impact on streams like the Houndsden Gutter is rather unpleasant. Where possible problem households are tracked down. So what can we do? Check that your home's waste pipes are connected to the sewer, see the website www.connectright.org.uk for lots of information on what/how to check, or contact Thames Water for advice.

Aimee also talked about the impact of road run off and storm water. She outlined the Sustainable Drainage Systems (SuDS) being installed in local sites as part of the Salmons Brook – Healthy River Challenge:

[The Glenbrook at Lonsdale Drive](#), which goes into Boxers Lake, sadly in a sorry state.

[The Spinney at Houndsden Rd](#), next to Houndsden Stream, another stream suffering from visible (and odorous) pollution.

[The woodland at Grovelands Park](#) – here the road run-off from Seaforth Gardens and Branscombe Gardens will be treated before it goes into Grovelands Stream.

The land next to the [A10 northbound carriageway](#), a former council tree nursery, where the run off goes into the Salmons Brook.

There was further discussion about the loss of valuable green space in London, particularly front gardens that have been paved over. These non-porous surfaces (concrete, asphalt etc.) see ever more polluted storm water surge into rivers. There is a lot more information on the Thames21 site, including a really clear video on the SuDS process, which can be found at: www.youtube.com/susdrain.